

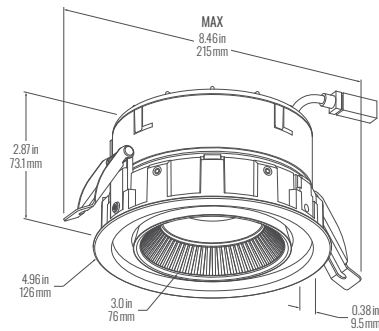
FLUXWERX®



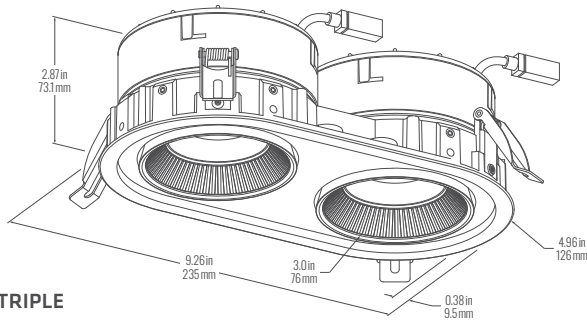
DIMENSIONS

Round Trim Flange version.

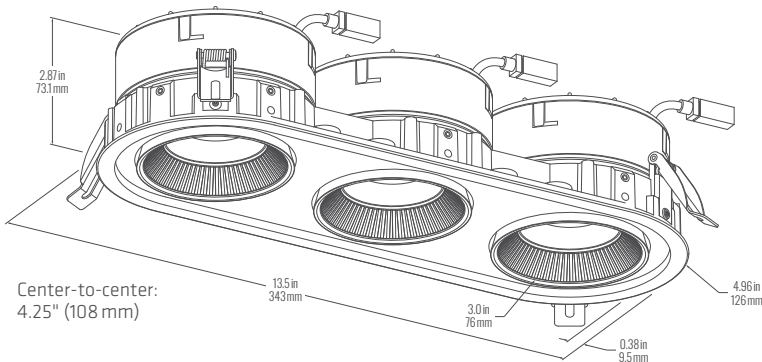
(S3) 3" SINGLE



(D3) 3" DOUBLE



(T3) 3" TRIPLE



SPECIFICATION DATA

SPEAK RECESSED MULTIPLE 3" (SK1Mx3 | SK1Lx3)

CATALOG

PROJECT

NOTES

PERFORMANCE FOCUS

Per Light Module, Adjustable, Medium Beam, 80 CRI 3500 K

	Energy (W)	Light (lm)	Efficacy (lm/W)	Certified
B	9 W	800	91	ENERGY STAR TITLE 24 JA8 (90 CRI) <i>(Pending)</i>
C	14 W	1200	96	
D (Fixed)	18 W	1700	91	
Color Matching (SDCM)		Lumen Maintenance (hr)		
		L80 per TM21		L70 Estimate
< 2		> 54,000		> 140,000

Preliminary nominal values, refer to back pages for full performance data.

FEATURES

- 1, 2 or 3 light recessed multiple with fixed or adjustable light modules.
- 3" or 4" open center optic – reflector replaced by source.
- Anidolic Extraction Optics™ generate a visually comfortable, precisely controlled light distribution in a narrow (30°), medium (40–45°) or fixed wide beam (60°).
- Optional drop center delivers a bolder ring of light appearance.
- Round or square trims with drywall trimless, millwork and IC housing options for a wide range of ceilings & aesthetics.
- Tailored multiple version allows mixed optics, finishes & 2-circuit wiring for more complex applications.
- Medium & wide beam UGR < 19, narrow beam < 16.
- A variety of CRI, CCT and output choices as well as dim-to-warm control.

Declare.



SPECIFICATION DATA

SPEAK RECESSED MULTIPLE 3"

(SK1Mx3 | SK1Lx3)

CATALOG NUMBER

1	2	3	4	5	6	7	8	9	10	11	12	13	14	15	16	17	OPTIONS	CONTROLS
SK1																		

Extra features for Tailored Version

ORDER GUIDE

1 FAMILY	2 VERSION	3 SIZE	4 HOUSING	5 TRIM
SK1 Speak	M Recessed Multiple L Tailored Multiple	S3 3" Single ¹ D3 3" Double T3 3" Triple ¹ Tailored version only applies to Double & Triple.	A New Construction E Retrofit H Insulation Contact Housing ² R Remote Driver ² T Remote Driver - Retrofit C Chicago CCEA Housing ² V Chicago CCEA - Remote Driver ² ² New construction, includes rough-in mount.	C1 Round Trim Flange C2 Round Drywall Trimless C3 Round Millwork Edge Q1 Square Trim Flange Q2 Square Drywall Trimless Q3 Square Millwork Edge

6 FINISH ³	7 LIGHT MODULE ⁵	8 BEAM SPREAD	9 CRI	10 CCT	11 MODULE ENERGY ⁷
TRIM SURROUND ⁴ LIGHT MODULE B Black Powdercoat S Metallic Silver Powdercoat W White Powdercoat C Custom Color (RAL)	D Fixed - Drop Center R Fixed - Recess Center J Adjustable ⁵ For Single Fixed, use Recessed Downlight. Contact Fluxwerx for max # of Fixed per Housing type per Module Energy.	N1 Narrow (30°) M1 Medium (40° 45°) W1 Wide (60°) ⁶	8 80 CRI 9 90 CRI	27 2700 K 30 3000 K 35 3500 K 40 4000 K A1 Dim-to-Warm 2700-2200K A2 Dim-to-Warm 3000-2200K A3 Dim-to-Warm 3500-2200K	B 9 W C 14 W D 18 W (Fixed) ⁸ ⁷ Add 2 W for BP or 347 V. ⁸ Add 2 W when Non-IC Housing for Thermal Switch.

³ Indicate separate finish for Trim, Surround & Light Module.

⁴ Surround: Light module border & inner housing.

⁶ Wide beam only with Fixed Light Module.

12 DRIVER	13 VOLTAGE	OPTIONS	CONTROLS
F1 Non-Dim F2 0-10 V Dim 3% F4 Line Voltage Dim (Fwd/Rev) 3% 120 V E1 eldoLED ECO 0-10 V Dim 1% E2 eldoLED SOLO 0-10 V Dim 0.1% E3 eldoLED ECO DALI-2 DT6 Dim 1% E4 eldoLED SOLO DALI-2 DT6 Dim 0.1% L1 Lutron Hi-Lume 1% EcoSystem (LDE1) L3 Lutron Hi-Lume Premier 0.1% EcoSystem (PEQ0) ⁹	M 120-277 V 1 120 V ¹⁰ 2 277 V ¹⁰ 3 347 V ¹⁰ Fixed voltage only for (F4) line dim driver or nLight controls.	A 2 Circuit Wiring ¹¹ B Battery Pack ¹² F 6' Flex Whip (not CCEA) H Emergency Switch (GTD) ¹² ¹¹ Separate circuit for Module B. Energy difference requires 2nd circuit. ¹² Detached, prewired BP or GTD. BP 120-277 V only. Phase Dim not for GTD.	TYPE & LOCATION ¹³ R Remote Sensor / Controller on Ceiling V Controller on Remote Enclosure ¹³ Controls selection may be limited by version, protocol or other features – see Controls page.
			BRAND & PROTOCOL ¹³ N1 Acuity nLight Wired ^{14,15} N2 Acuity nLight Air rIO ¹⁴ N3 Acuity nLight Air RPP20 ^{14,15} L1 Lutron Athena Wireless M1 Legrand Wattstopper PLUS V1 Leviton Intellect Wireless ¹⁴ nLight: Controller (V) only. ¹⁵ Remote Driver housing only.

⁹ Lutron L3: Max Energy D (18 W).

EXTRA FEATURES FOR TAILORED VERSION

Tailored version is to specify differences in one of the Light Modules – can be placed in any module position.

14 LIGHT MODULE FINISH (B)	15 LIGHT MODULE (B)	16 BEAM SPREAD (B)	17 MODULE ENERGY (B)
B Black Powdercoat S Metallic Silver Powdercoat W White Powdercoat C Custom Color (RAL)	D Fixed - Drop Center R Fixed - Recess Center J Adjustable	N1 Narrow (30°) M1 Medium (40° 45°) W1 Wide (60°) ¹⁶ ¹⁶ Wide beam only with Fixed Light Module.	B 9 W C 14 W D 18 W (Fixed) ¹⁷ ¹⁷ Add 2 W when Non-IC Housing for Thermal Switch.

SPECIFICATION DATA

SPEAK RECESSED MULTIPLE 3" (SK1Mx3 | SK1Lx3)

CEILING & TRIM

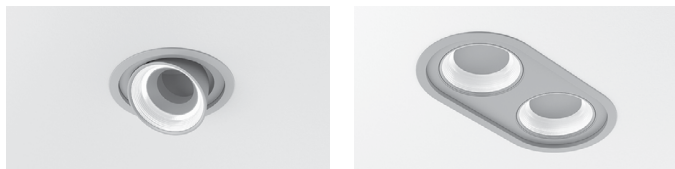
(S3) 3" SINGLE

(J) Adjustable Light Module shown

(D3) 3" DOUBLE OR (T3) TRIPLE

(D3) Double with (R) Fixed Recess Center shown

(C1) ROUND TRIM FLANGE (DRYWALL OR GRID)



(C2) ROUND DRYWALL TRIMLESS

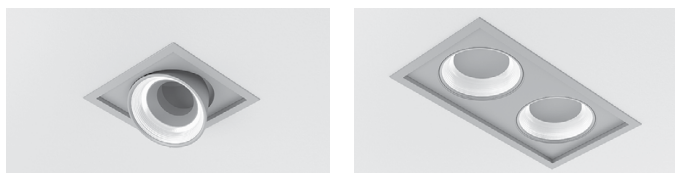


(C3) ROUND MILLWORK EDGE



(J) Adjustable Light Module shown

(Q1) SQUARE TRIM FLANGE (DRYWALL OR GRID)



(Q2) SQUARE DRYWALL TRIMLESS



(Q3) SQUARE MILLWORK EDGE



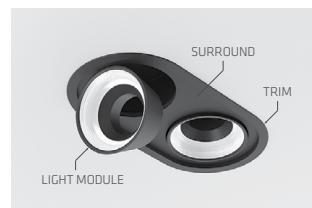
(J) Adjustable Light Module shown

FINISHES

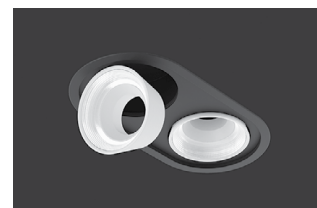
All finishes high temperature powder coat.

Trim, Surround and Light Module finish in any combination of Black, Metallic Silver, White or RAL color.

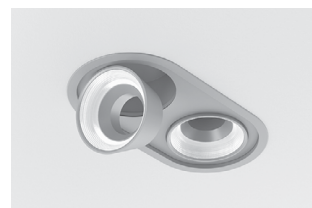
Examples of Double Round Adjustable with Trim Flange shown.



(BBB) BLACK TRIM, SURROUND,
LIGHT MODULE



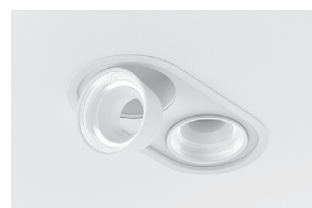
(BBW) BLACK TRIM & SURROUND,
WHITE LIGHT MODULE



(SSS) SILVER TRIM, SURROUND,
LIGHT MODULE



(WWB) WHITE TRIM & SURROUND,
BLACK LIGHT MODULE



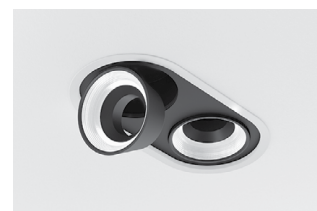
(WWW) WHITE TRIM, SURROUND,
LIGHT MODULE



(BBW) BLACK TRIM,
WHITE SURROUND & LIGHT MODULE



(C) CUSTOM



(WBB) WHITE TRIM,
BLACK SURROUND & LIGHT MODULE



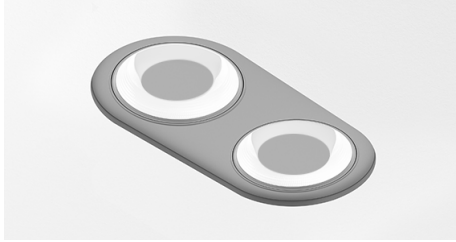
(WBW) WHITE TRIM, BLACK SURROUND,
WHITE LIGHT MODULE

SPECIFICATION DATA

SPEAK RECESSED MULTIPLE 3" (SK1Mx3 | SK1Lx3)

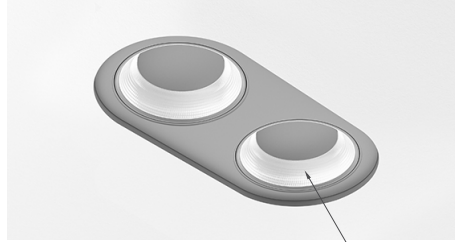
LIGHT MODULE

(D) FIXED – DROP CENTER



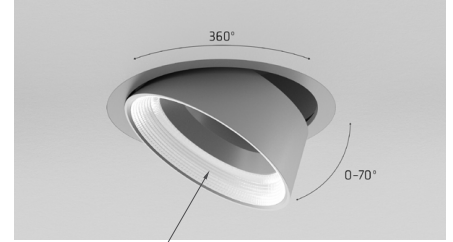
(D3) Double with (C2) Round Drywall Trimless shown

(R) FIXED – RECESS CENTER



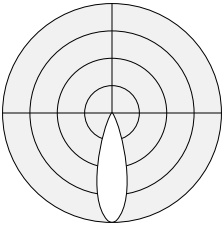
ANIDOLIC EXTRACTION OPTICS™
ELIMINATES REFLECTOR

(J) ADJUSTABLE

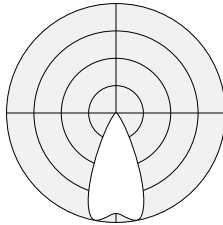


DISTRIBUTIONS

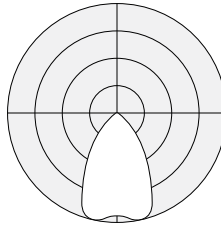
(N1) Narrow Beam (30°)



(M1) Medium Beam (40°)

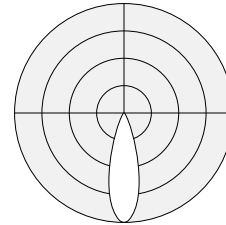


(W1) Wide Beam (60°)

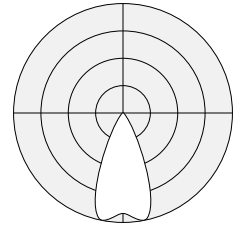


(D,R) FIXED – DROP | RECESS CENTER

(N1) Narrow Beam (30°)



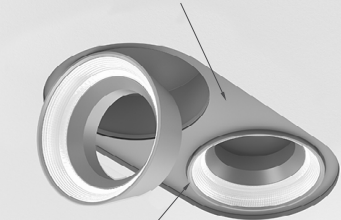
(M1) Medium Beam (45°)



(J) ADJUSTABLE

LIGHT MODULE POSITIONING

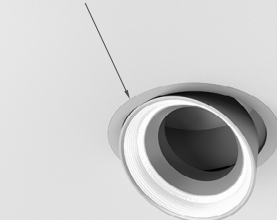
DOUBLE & TRIPLE ADJUSTABLE
SURROUND SET BACK 0.2" (5 mm)
OPTIC FLUSH WITH CEILING



TAILORED
ONE SPECIALIZED LIGHT MODULE CAN
BE PLACED IN ANY LOCATION

TYPICAL – OPTIC FLUSH WITH CEILING

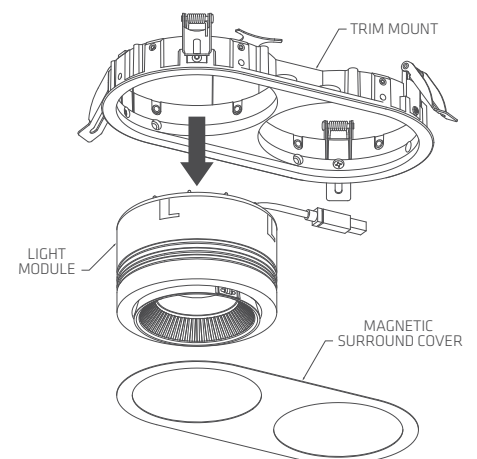
SINGLE ADJUSTABLE
EITHER OPTIC OR SURROUND
FLUSH WITH CEILING



SINGLE ADJUSTABLE OPTION – SURROUND FLUSH WITH CEILING

REMOVABLE LIGHT MODULE

To remove Light Module: Adjustable: Pull down on optic.
Fixed: Push up on center and release.



SPEAK RECESSED MULTIPLE 3" (SK1Mx3 | SK1Lx3)

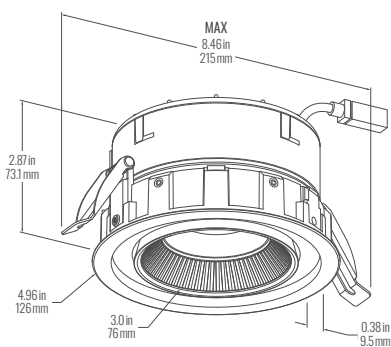
CEILING INTEGRATION – TRIM

Ceiling thickness: 0.04 in (1 mm) – 1.5 in (38 mm), e.g. acoustic tile, GWB. Millwork: 0.68 in (16 mm) – 1.5 in (38 mm).
Minimum plenum height (from finished ceiling plane): 4.0 in (102 mm).
(A,R) New Construction or (E,T) Retrofit, (J) Adjustable Light Module shown.

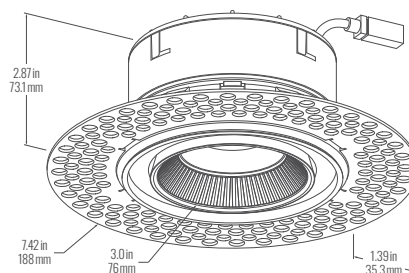
(S3) 3" SINGLE

(C1) ROUND TRIM FLANGE (DRYWALL OR GRID)

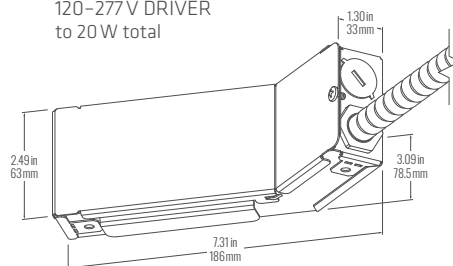
Cutout diameter: 4.75 in (120 mm)



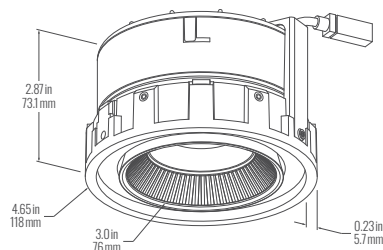
(C2) ROUND DRYWALL TRIMLESS



120-277V DRIVER
to 20W total

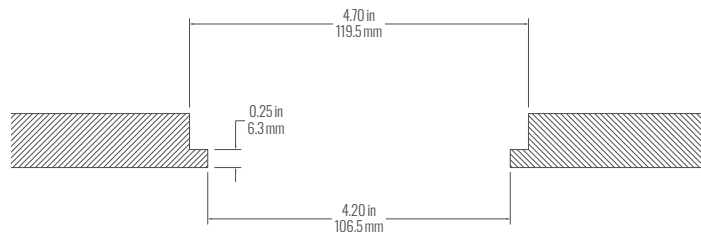


(C3) ROUND MILLWORK EDGE



PLENUM SIDE COUNTERBORE INSTALL

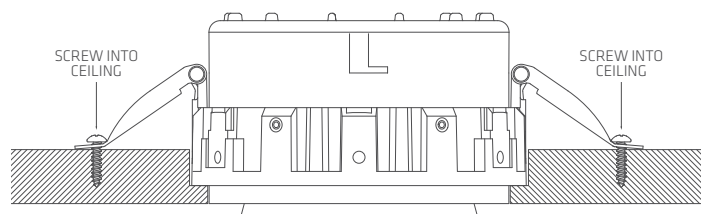
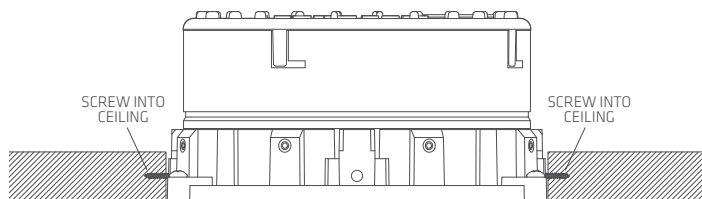
Panel thickness: 0.38"–1.5"



ROOM SIDE (THROUGH HOLE) INSTALL

Cutout diameter: 4.685 in (119 mm)

Panel thickness: 0.68 in – 1.5 in



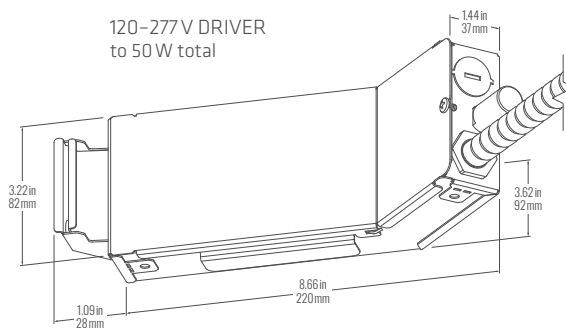
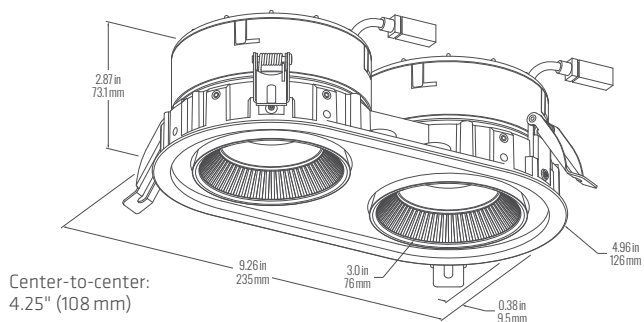
SPEAK RECESSED MULTIPLE 3" (SK1Mx3 | SK1Lx3)

CEILING INTEGRATION – TRIM

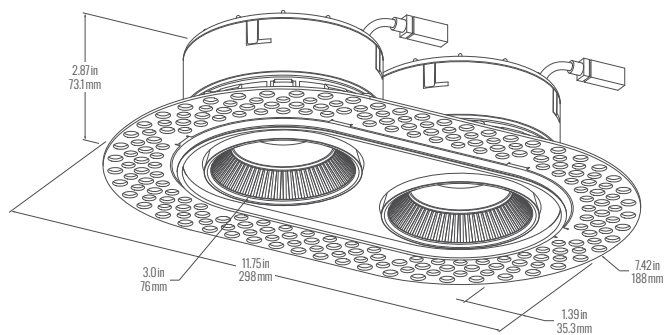
Ceiling thickness: 0.04 in (1 mm) – 1.5 in (38 mm), e.g. acoustic tile, GWB. Millwork: 0.68 in (16 mm) – 1.5 in (38 mm).
Minimum plenum height (from finished ceiling plane): 4.0 in (102 mm) for < 20 W total; 5.0 in (127 mm) for > 20 W total.
(A,R) New Construction or (E,T) Retrofit, (J) Adjustable Light Module shown.

(D3) 3" DOUBLE

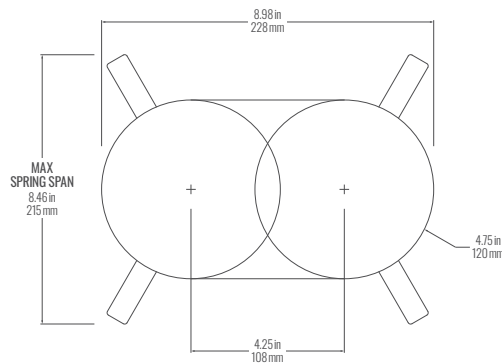
(C1) ROUND TRIM FLANGE (DRYWALL OR GRID)



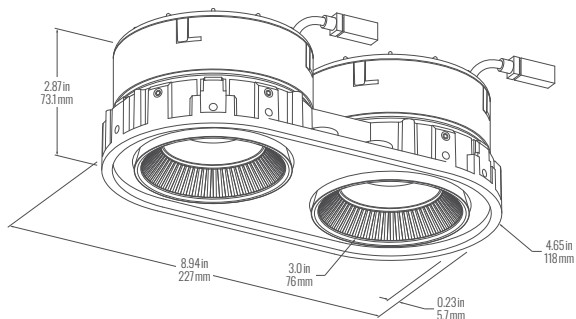
(C2) ROUND DRYWALL TRIMLESS



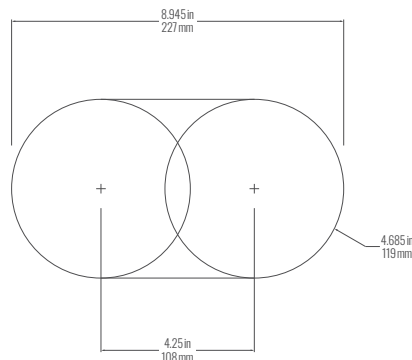
CEILING CUTOUT (for C1 Trim and C2 Trimless)



(C3) ROUND MILLWORK EDGE



CEILING CUTOUT



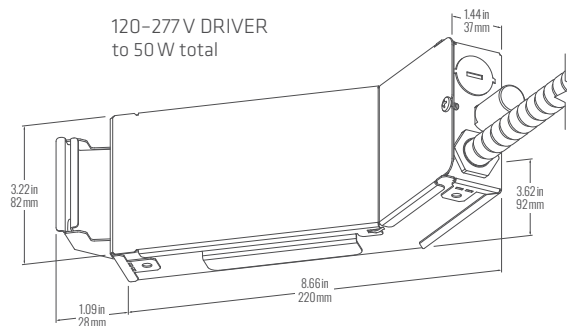
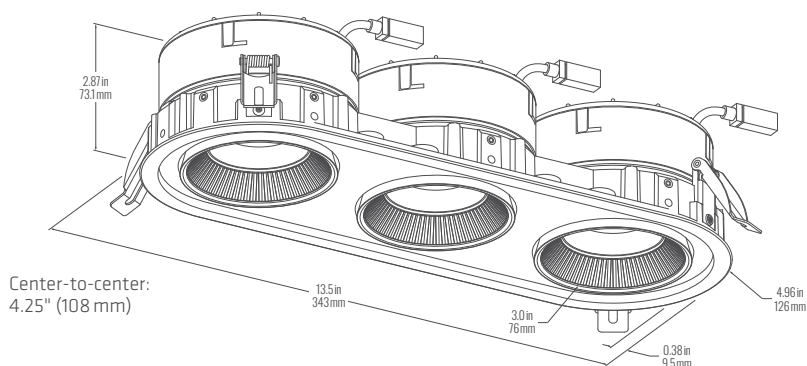
SPEAK RECESSED MULTIPLE 3" (SK1Mx3 | SK1Lx3)

CEILING INTEGRATION – TRIM

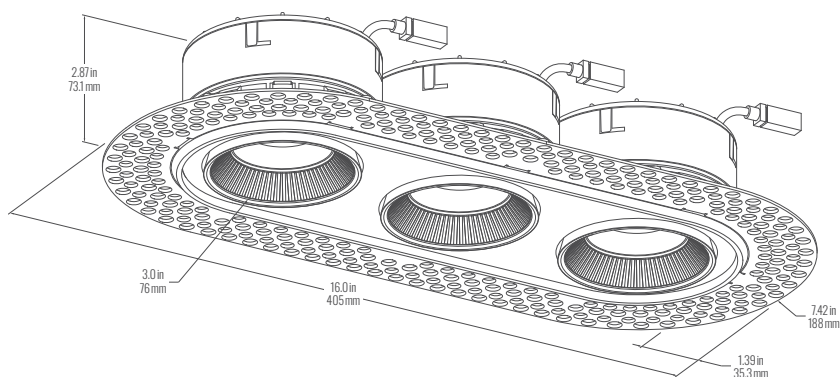
Ceiling thickness: 0.04 in (1 mm) – 1.5 in (38 mm), e.g. acoustic tile, GWB. Millwork: 0.68 in (16 mm) – 1.5 in (38 mm).
Minimum plenum height (from finished ceiling plane): 4.0 in (102 mm) for < 20 W total; 5.0 in (127 mm) for > 20 W total.
(A,R) New Construction or (E,T) Retrofit, (J) Adjustable Light Module shown.

(T3) 3" TRIPLE

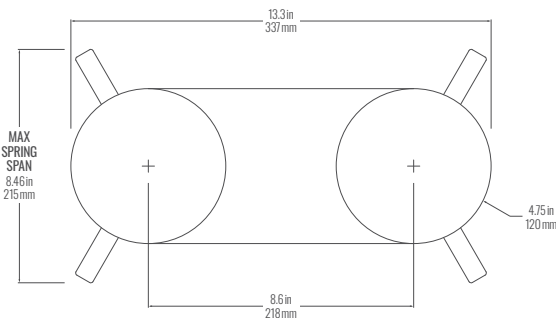
(C1) ROUND TRIM FLANGE (DRYWALL OR GRID)



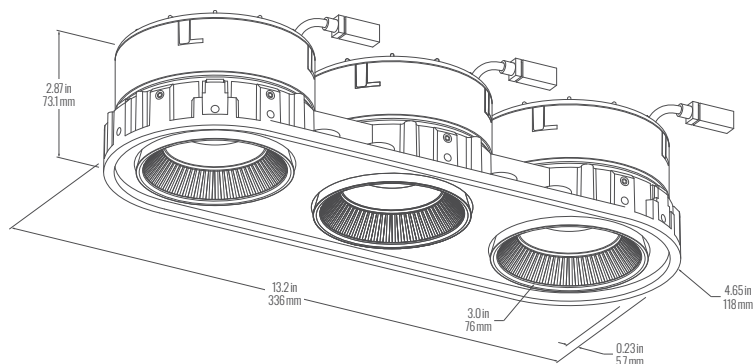
(C2) ROUND DRYWALL TRIMLESS



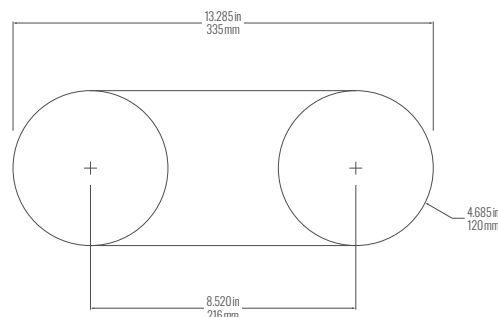
CEILING CUTOUT
(for C1 Trim and C2 Trimless)



(C3) ROUND MILLWORK EDGE



CEILING CUTOUT



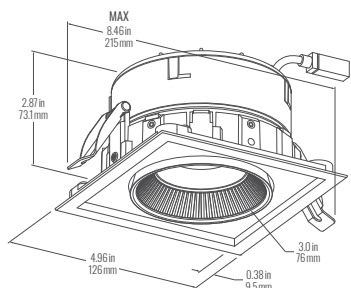
SPEAK RECESSED MULTIPLE 3" (SK1Mx3 | SK1Lx3)

CEILING INTEGRATION – TRIM

Ceiling thickness: 0.04 in (1 mm) – 1.5 in (38 mm), e.g. acoustic tile, GWB. Millwork: 0.68 in (16 mm) – 1.5 in (38 mm).
Minimum plenum height (from finished ceiling plane): 4.0 in (102 mm) for < 20 W total; 5.0 in (127 mm) for > 20 W total.
(A,R) New Construction or (E,T) Retrofit, (J) Adjustable Light Module shown.

(S3) 3" SINGLE

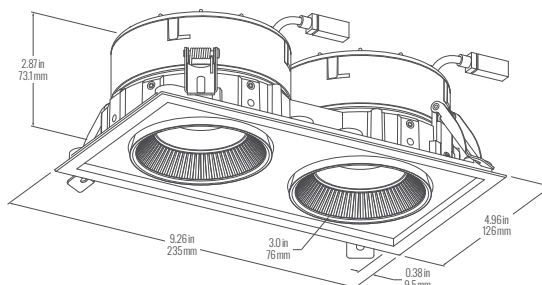
Cutout: 4.75 in (120 mm) x 4.75 in (120 mm) square



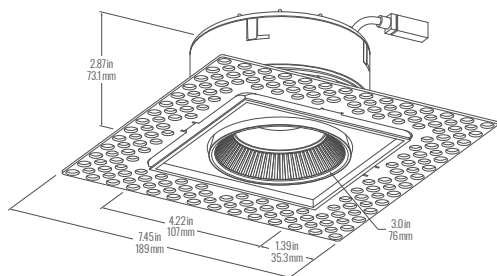
(Q1) SQUARE TRIM FLANGE
(DRYWALL OR GRID)

(D3) 3" DOUBLE

Cutout: 4.75 in (120 mm) x 8.98 in (228 mm) rectangle

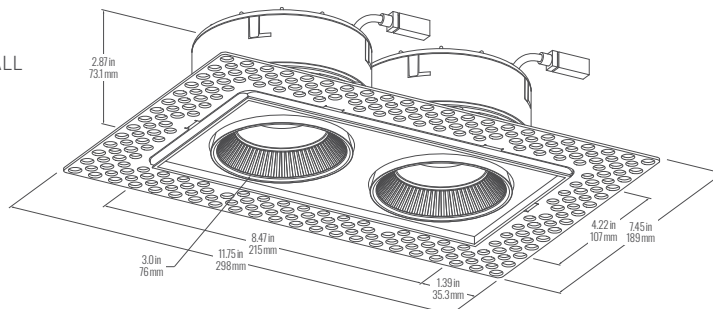


Cutout: 4.75 in (120 mm) x 4.75 in (120 mm) square

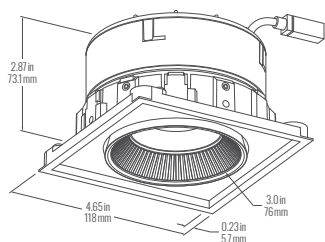


(Q2) SQUARE DRYWALL
TRIMLESS

Cutout: 4.75 in (120 mm) x 8.95 in (228 mm) rectangle

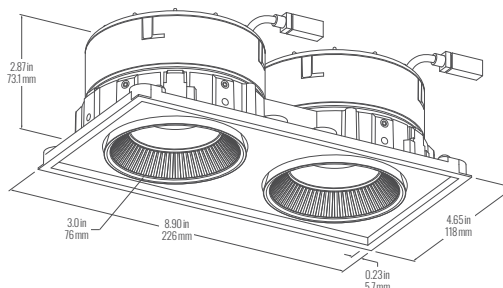


Cutout: 4.685 in (119 mm) x 4.685 in (119 mm) square

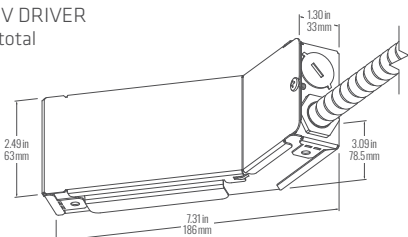


(Q3) SQUARE MILLWORK EDGE

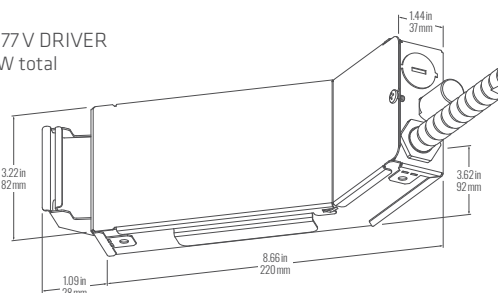
Cutout: 4.685 in (119 mm) x 8.945 in (227 mm) rectangle



120–277 V DRIVER
to 20 W total



120–277 V DRIVER
to 50 W total



SPEAK RECESSED MULTIPLE 3" (SK1Mx3 | SK1Lx3)

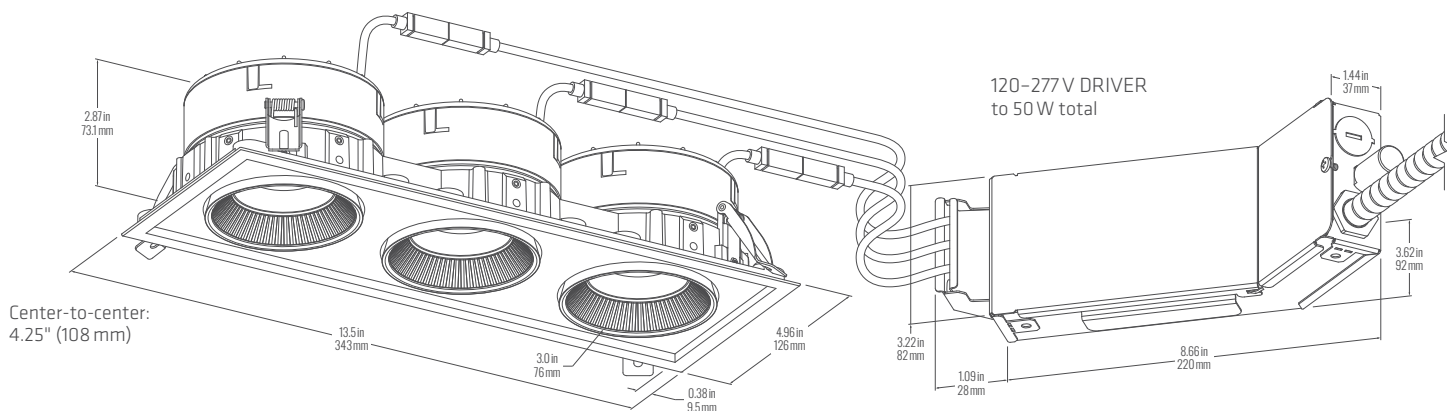
CEILING INTEGRATION – TRIM

Ceiling thickness: 0.04 in (1 mm) – 1.5 in (38 mm), e.g. acoustic tile, GWB. Millwork: 0.68 in (16 mm) – 1.5 in (38 mm).
Minimum plenum height (from finished ceiling plane): 4.0 in (102 mm) for < 20 W total; 5.0 in (127 mm) for > 20 W total.
(A,R) New Construction or (E,T) Retrofit, (J) Adjustable Light Module shown.

(T3) 3" TRIPLE

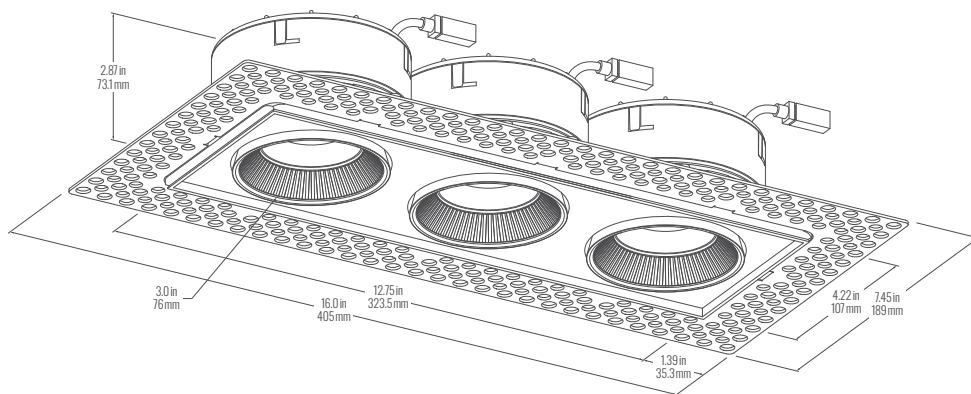
(Q1) SQUARE TRIM FLANGE (DRYWALL OR GRID)

Cutout: 4.75 in (120 mm) x 13.2 in (336 mm) rectangle



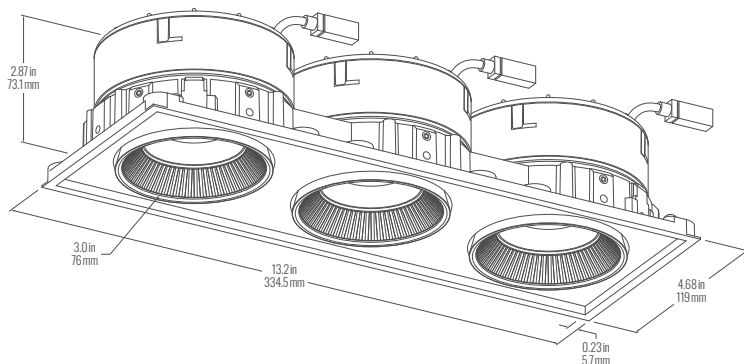
(Q2) SQUARE DRYWALL TRIMLESS

Cutout: 4.75 in (120 mm) x 13.2 in (336 mm) rectangle



(Q3) SQUARE MILLWORK EDGE

Cutout: 4.685 in (119 mm) x 13.205 in (335 mm) rectangle



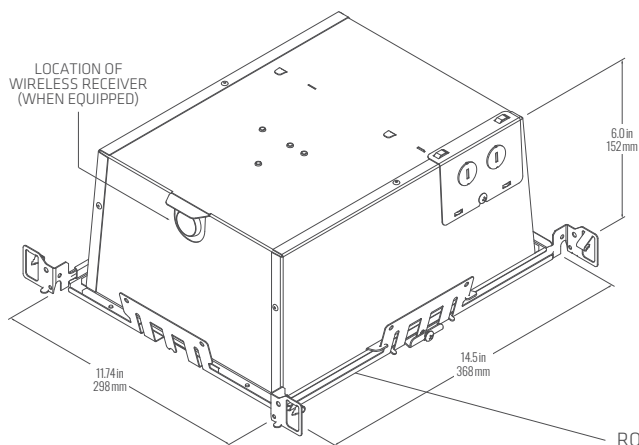
SPEAK RECESSED MULTIPLE 3" (SK1Mx3 | SK1Lx3)

CEILING INTEGRATION – (H) INSULATION CONTACT or (C,V) CHICAGO CCEA HOUSING

Ceiling thickness: 0.04 in (1 mm) – 1.5 in (38 mm), e.g. acoustic tile, GWB. Millwork: 0.68 in (16 mm) – 1.5 in (38 mm).
Minimum plenum height (from top of ceiling plane): 6.25 in (158 mm).

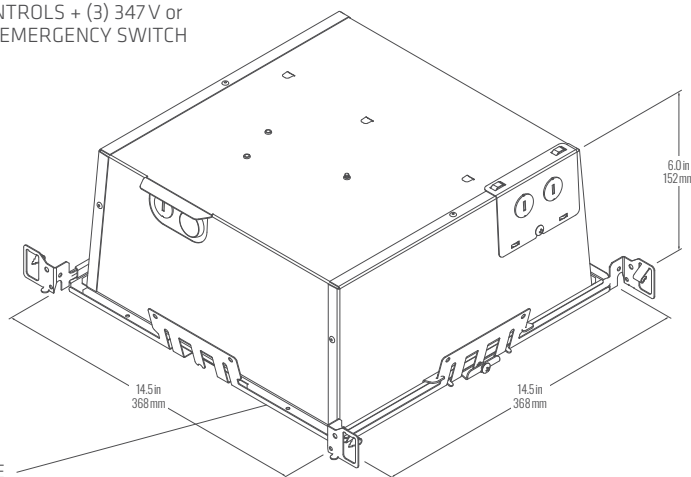
(S3) 3" SINGLE

120–277 V



(D3) 3" DOUBLE

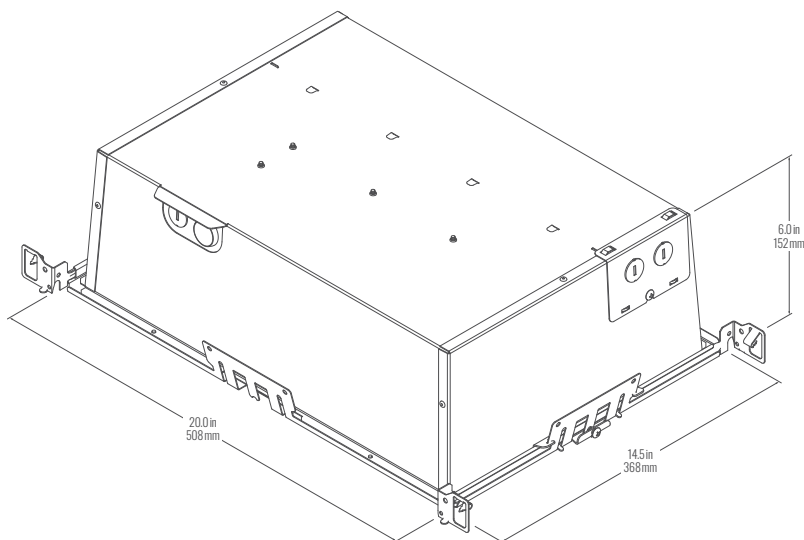
Also for (S3) 3" Single with
– (B) BATTERY PACK
– CONTROLS + (3) 347 V or
(H) EMERGENCY SWITCH



ROUGH-IN FRAME
See later section for details.

(T3) 3" TRIPLE

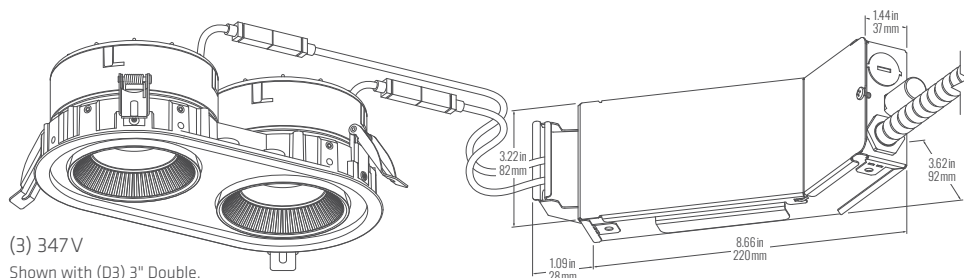
Also for (D3) 3" Double with
(B) BATTERY PACK + CONTROLS



SPEAK RECESSED MULTIPLE 3" (SK1Mx3 | SK1Lx3)

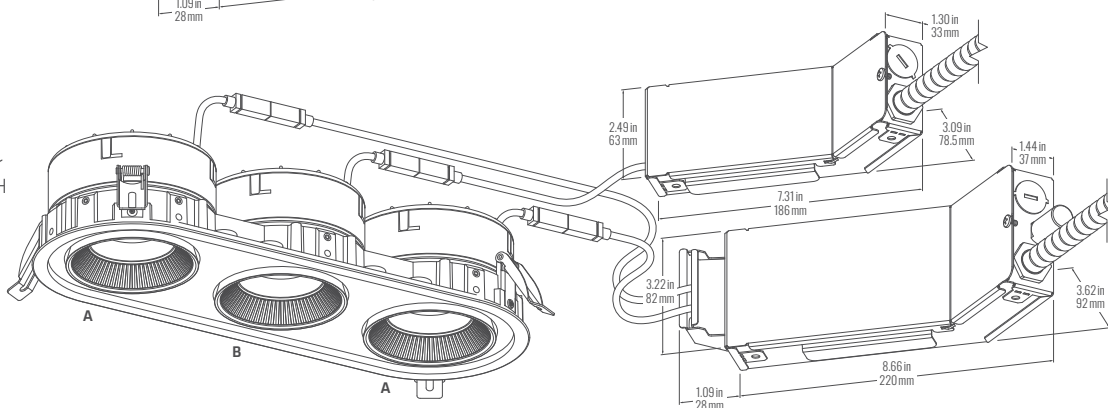
CEILING INTEGRATION – DRIVER ENCLOSURE

Minimum plenum height (from finished ceiling plane): 5.0 in (127 mm). Shown with (D3) 3" Double.

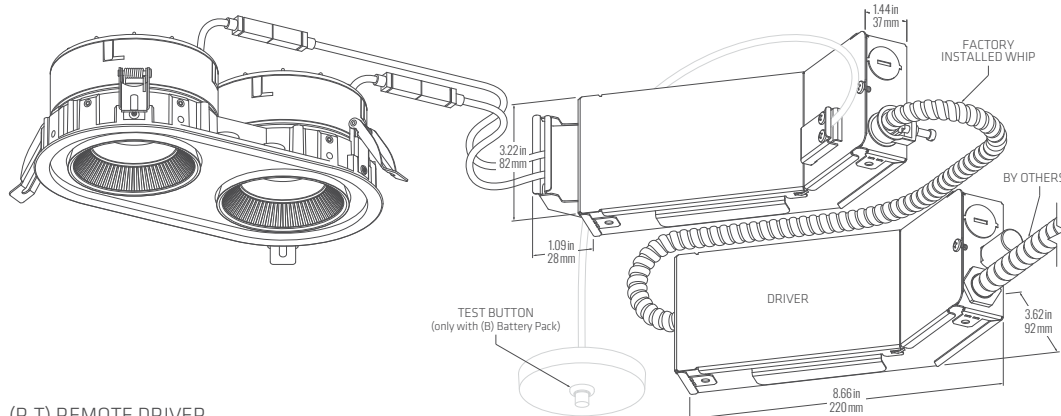


(3) 347V
Shown with (D3) 3" Double.

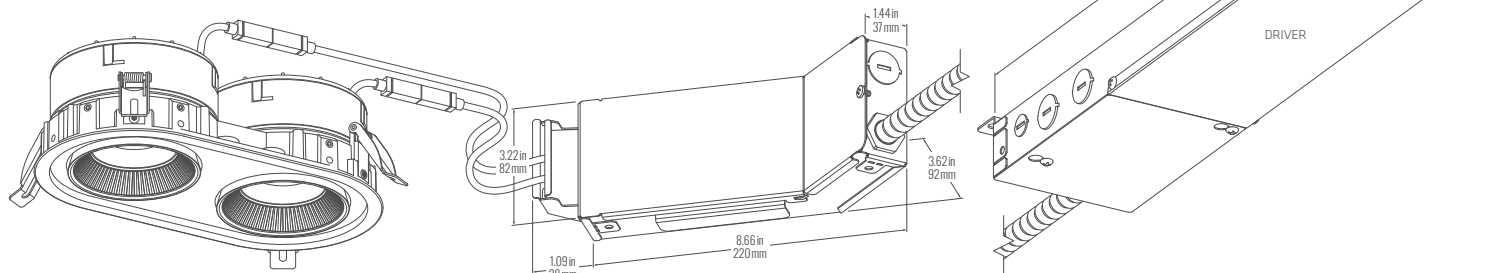
(A) 2 CIRCUIT WIRING OPTION or
(SK1L) TAILORED VERSION WITH
2 ENERGY LEVELS
Shown with (T3) 3" Triple.



(H) EMERGENCY SWITCH
(B) BATTERY PACK
Shown with (D3) 3" Double.



(R,T) REMOTE DRIVER
(NEW CONSTRUCTION OR RETROFIT)
Shown with (D3) 3" Double.

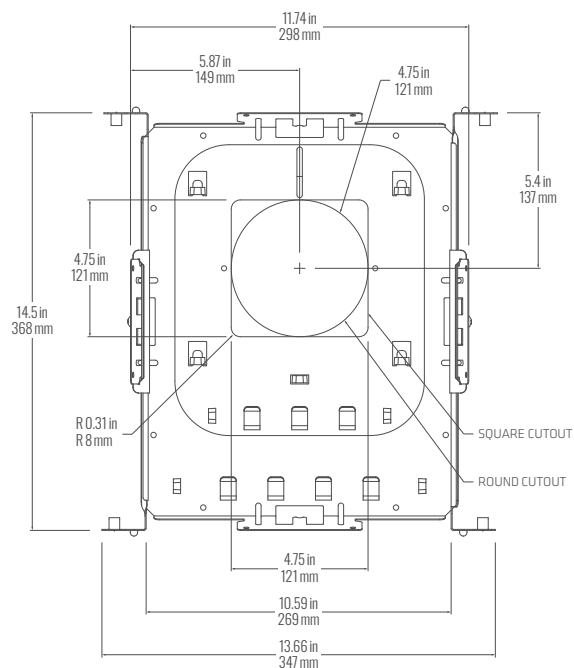


SPEAK RECESSED MULTIPLE 3" (SK1Mx3 | SK1Lx3)

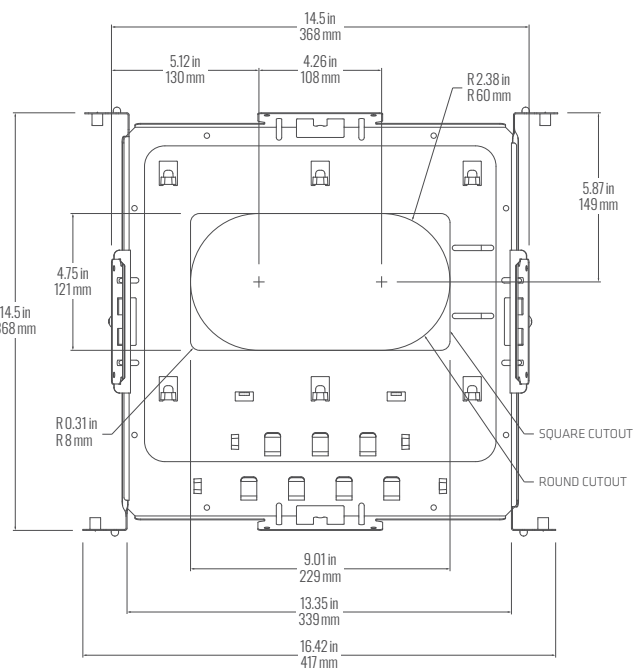
CEILING INTEGRATION – ROUGH-IN FRAME

Rough-in frame included with new construction housing options.

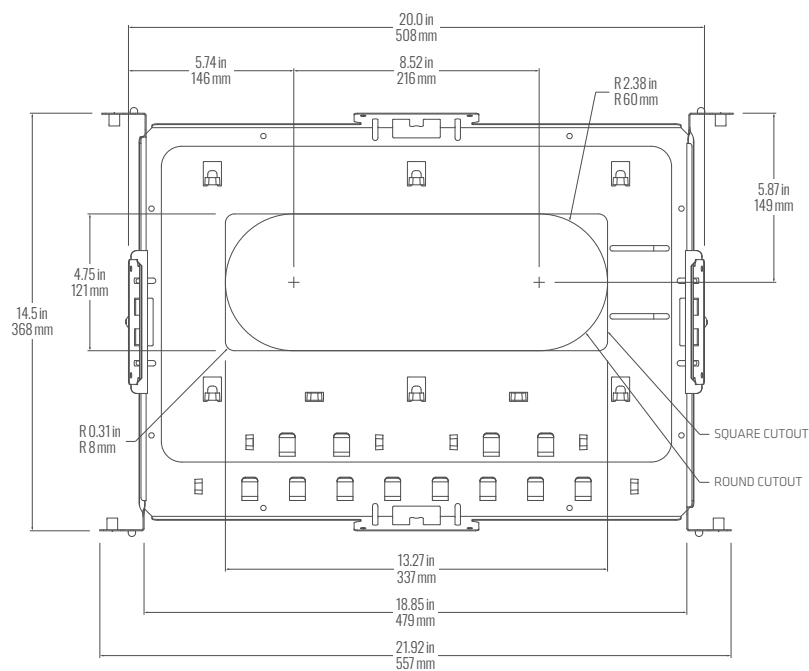
(S3) 3" SINGLE



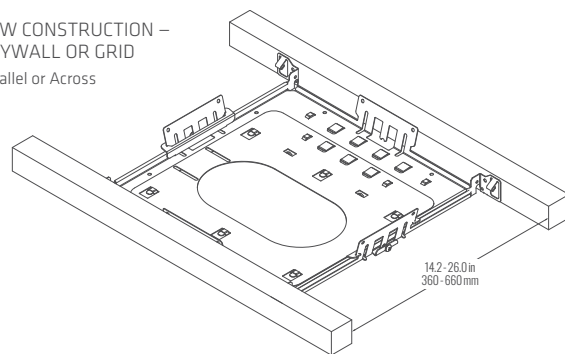
(D3) 3" DOUBLE



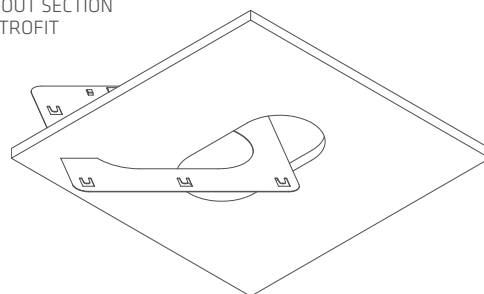
(T3) 3" TRIPLE



NEW CONSTRUCTION –
DRYWALL OR GRID
Parallel or Across



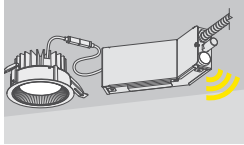
KNOCK-OUT SECTION
FOR RETROFIT



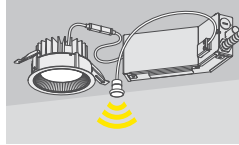
SPECIFICATION DATA
SPEAK RECESSED MULTIPLE 3"
(SK1Mx3 | SK1Lx3)

CONTROLS & SENSORS

LUMINAIRE INTEGRATION



V
 Controller on
 Enclosure/Plenum Side

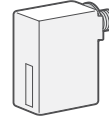


R
 Sensor,
 Remote/on Ceiling

(N1) Acuity
 nLight Wired



nLight wired, digital network.
 Model: nPS-80-EZ or nPS-80-EZ-ER
 (with **H** – Emergency Switching)

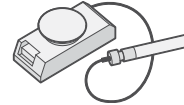


VN1 nLight Wired Controller, Enclosure/Plenum Side

(N2, N3) Acuity
 nLight Air



Acuity nLight wireless network
 interfaces.
 Models: rIO, rPP20

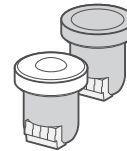


VN2 nLight rIO Controller, Enclosure/Plenum Side
VN3 nLight rPP20 Controller, Enclosure/Plenum Side

(L1) Lutron
 Athena



Lutron Athena wireless smart
 controllers & sensors.
 Models: A-WN-D01-RF, A-WN-D01-OCC
 For RL1: Default Athena color to match trim color
 Trim Athena
 WH WH
 SV BK
 BK BK
 For VL1: default WH

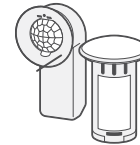


VL1 Athena Controller, Enclosure/Plenum Side
RL1 Athena Sensor, Remote/on Ceiling

(M1) Legrand
 Wattstopper
 PLUS



Wattstopper PLUS wireless smart
 controllers & sensors.
 Models: ZBHA-CLM, EN-CLM-PIR

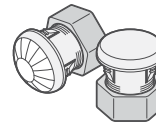


VM1 Wattstopper PLUS Control Module,
 Enclosure/Plenum Side
RM1 SensiLUM Sensor, Remote/on Ceiling

(V1) Leviton
 Intellect



Leviton Intellect wireless smart
 controllers & sensors.
 Models: ZL0x0, ZL0xS



VV1 Intellect Controller, Enclosure/Plenum Side
RV1 Intellect Sensor, Remote/on Ceiling

Ask us about...

Pass & Seymour®

EATON

DISTECH
 CONTROLS

CRESTRON

CASAMBI

All integrated controls trademarks and logos are the property of their manufacturer and are used under license.

SPECIFICATION DATA

SPEAK RECESSED MULTIPLE 3" (SK1Mx3 | SK1Lx3)

NOTES

CONSTRUCTION

- Architectural grade aluminum and 22 ga. steel housings
- Housings suitable for new build or retrofit installation in grid, GWB or millwork ceilings
- White, metallic silver or black textured powdercoat standard finishes

OPTICAL

- Anidolic optical structures
- Precision molded high transmittance clear acrylic lenses
- Long life LED system designed for typical TM21 lumen maintenance \geq L80 @ 54,000 h
- Available in 2700 K, 3000 K, 3500 K, 4000 K with CRI \geq 80 and R9 \geq 0, or CRI \geq 90 and R9 \geq 50, all with color accurate binning \leq 2 SDCM

INDEPENDENT TESTING

- IESNA LM79
- IESNA LM80 (LED @ 9,000 h)

ELECTRICAL

- Detached high efficiency drivers for 50–60 Hz, 120–277V with transformer for 347 V
- Power Factor > 0.9
 - Driver F1, F2, F4
 - Driver E1-E4, Energy C-E
 - Driver L1, Energy D-E
- Total Harmonic Distortion $< 20\%$ Driver E1-E4, Energy C-E $< 23\%$ Driver F1, F2, F4
- Dim level: Standard 3%, optional 1% or 0.1%
- Optional Battery Pack delivers 4 W Class 2 rated output for 90 min. See Family Performance for estimated emergency output
- Optional GTD (Generator Transfer Switch), 120–277V, disables 0–10 V control during emergency for full light output
- Optional flex whip: 6' pre-wired
- Surge Protection: Meets ANSI C82.11 spec and ANSI/IEEE C62.41
- Inrush Current: Meets NEMA 410

WIRE GAUGE

- Recommended low voltage wire gauge (AWG) for minimal losses over distance when REMOTE mounting:
 - 30 ft | 18 ga
 - 100 ft | 14 ga

ENVIRONMENTAL & CARE

- Designed for use in dry or damp indoor locations with ambient temperatures of 0–30°C (32–86°F)
- The luminaire may be damaged by chemicals such as chlorine, solvents, ammonia, alcohol or sulfur in the area of operation or in cleaning products. Damage from contaminants is not covered under warranty.
- Not suitable for natatorium environments, e.g. swimming pools, hot tubs and saunas.
- Clean only by wiping with a slightly water-damp, soft, clean cloth.

WEIGHT

- Light Module & Trim
 - Single: 1.5 lbs (0.7 kg)
 - Double: 3.1 lbs (1.7 kg)
 - Triple: 4.6 lbs (2.1 kg)
- Driver Enclosure
 - 120–277 V up to 20 W, no options: 1.3 lbs (0.6 kg)
 - 120–277 V up to 50 W, no options: 1.7 lbs (0.8 kg)
 - With Controls / 347 V / GTD: 2.6 lbs (1.2 kg)
 - With Battery Pack (4 W) 3.3 lbs (1.5 kg)



WARRANTY



- 5 year limited warranty on all components and workmanship

APPROVALS

- UL Listed (USA + Canada)
- CCEA Chicago Plenum (Housing)
- IC Rated (Housing)
- Energy Star (90 CRI versions) *Pending*
- Title 24 JA8 (90 CRI versions) *Pending*
- Living Building Challenge (LBC) Approved

DRIVERS + EMERGENCY

STANDARD DRIVER OPTIONS	
OPTOTRONIC® ADVANCE 	F1 Non-Dim F2 0–10 V Dim 3% F4 Line Voltage Dim 3% (Forward/Reverse) 120 V
eldoLED®	E1 eldoLED ECO 0–10 V Dim 1% E2 eldoLED SOLO 0–10 V Dim 0.1% E3 eldoLED ECO DALI-2 DT6 Dim 1% E4 eldoLED SOLO DALI-2 DT6 Dim 0.1%
	L1 Lutron Hi-Lume 1% EcoSystem (LDE1) L3 Lutron Hi-Lume Premier 0.1% EcoSystem (PEQ0)

EMERGENCY OPTIONS	
 	B Battery Pack Iota ILBLP 7W H Emergency Switching Functional Devices ESR/LBC Emergency Lighting Relay

Driver and emergency selection may be limited by product or version.
For further options, contact Fluxwerx.

SPEAK RECESSED MULTIPLE 3" (SK1Mx3 | SK1Lx3)

FAMILY PERFORMANCE

COLOR

80 CRI	4000 K	3500 K	3000 K	2700 K
Color Rendering (CRI)	81	83	82	83
Red Index (R ₉)	0	1	2	4
Fidelity (TM-30 R _f)	83	84	84	86
Gamut (TM-30 R _g)	94	95	95	95
Color Matching (SDCM)	< 2			

90 CRI	4000 K	3500 K	3000 K	2700 K
Color Rendering (CRI)	92	93	93	93
Red Index (R ₉)	55	57	57	58
Fidelity (TM-30 R _f)	89	90	90	92
Gamut (TM-30 R _g)	96	97	97	97
Color Matching (SDCM)	< 2			

Typical CRI and R₉ values.



LUMEN MAINTENANCE

	B 9 W	C 14 W	D (Fixed) 18 W
L80 per TM-21 (hr)	> 54,000		
L70 Estimate (hr)	> 140,000		

OUTPUT MULTIPLIERS

MULTIPLIER		Applies To
90 CRI	0.88	All 80 CRI
Battery Pack	0.99	B Energy (9 W)
Dim to Warm	0.60	2700 K, 3000 K, 3500 K

WIDE BEAM with	Recess Center	Drop Center
Black Finish	0.97	0.95
Silver Finish	0.98	0.96

For 90 CRI, dim-to-warm fixtures or emergency BP, use multipliers to scale published Light (lm), Efficacy (lm/W), Intensity (Cd) or Luminance (Cd/m²).

SPACING GUIDE – 3" ADJUSTABLE

3" Adjustable, 3500 K, 80 CRI – per Light Module

CONFIGURATION	DISTANCE FROM SOURCE	BEAM DIAMETER (ft)	B 9 W	C 14 W	OUTPUT MULTIPLIERS (for Illuminance, Beam Intensity)	
			ILLUMINANCE AT CENTER (fc)		CCT	Multiplier
SK1Mx3-JM1835 3" Medium Beam 3500 K	3 ft	2.8	126	190	2700 K	0.92
	6 ft	5.6	32	47	3000 K	0.98
	9 ft	8.4	14	21	3500 K	1.00
	12 ft	11.2	8	12	4000 K	1.03
	Center Beam Intensity (cd)		1,137	1,706		
SK1Mx3-JN1835 3" Narrow Beam 3500 K	3 ft	1.6	227	343		
	6 ft	3.2	57	86		
	9 ft	4.8	25	38		
	12 ft	6.4	14	21		
	Center Beam Intensity (cd)		2,047	3,083		

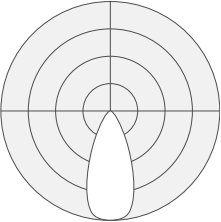
SPECIFICATION DATA

SPEAK RECESSED MULTIPLE 3" (SK1Mx3 | SK1Lx3)

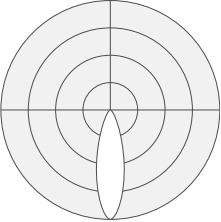
VERSION PERFORMANCE – 3" ADJUSTABLE

1 Light Module, White Finish, 80 CRI

3" Adjustable, Medium Beam

CONFIGURATION			LIGHT & POWER			VISUAL COMFORT		LIGHT DISTRIBUTION
CCT	ENERGY (NOM.)		LIGHT (lm)	POWER (W)	EFFICACY (lm/W)	MAX INTENSITY 45-90° (Cd)	UGR (4H x 8H)	
SK1Mx3-JM1840 4000 K	B	9 W	825	8.8	93.7	80	16.6	 <p>3" Adjustable Medium Beam</p>
	C	14 W	1237	13.9	89.0	120	18.0	
SK1Mx3-JM1835 3500 K	B	9 W	800	8.8	90.9	78	16.4	
	C	14 W	1200	13.9	86.3	117	17.9	
SK1Mx3-JM1830 3000 K	B	9 W	780	8.8	88.7	76	16.4	
	C	14 W	1170	13.9	84.2	114	17.8	
SK1Mx3-JM1827 2700 K	B	9 W	733	8.8	83.3	71	16.1	
	C	14 W	1100	13.9	79.1	107	17.6	
								Beam Angle 45°

3" Adjustable, Narrow Beam

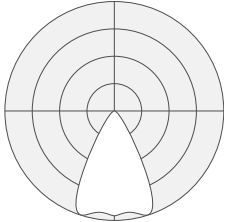
CONFIGURATION			LIGHT & POWER			VISUAL COMFORT		LIGHT DISTRIBUTION
CCT	ENERGY (NOM.)		LIGHT (lm)	POWER (W)	EFFICACY (lm/W)	MAX INTENSITY 45-90° (Cd)	UGR (4H x 8H)	
SK1Mx3-JN1840 4000 K	B	9 W	794	8.8	90.2	77	13.9	 <p>3" Adjustable Narrow Beam</p>
	C	14 W	1196	13.9	86.0	117	15.4	
SK1Mx3-JN1835 3500 K	B	9 W	770	8.8	87.5	75	13.8	
	C	14 W	1160	13.9	83.5	113	15.3	
SK1Mx3-JN1830 3000 K	B	9 W	751	8.8	85.3	73	13.8	
	C	14 W	1131	13.9	81.4	110	15.2	
SK1Mx3-JN1827 2700 K	B	9 W	706	8.8	80.2	69	13.5	
	C	14 W	1063	13.9	76.5	104	15.0	
								Beam Angle 30°

SPECIFICATION DATA
SPEAK RECESSED MULTIPLE 3"
(SK1Mx3 | SK1Lx3)

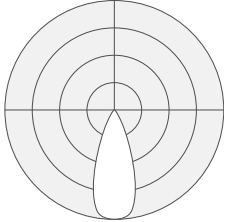
VERSION PERFORMANCE – 3" FIXED

1 Light Module, White Finish, 80 CRI

3" Fixed, Wide Beam

CONFIGURATION			LIGHT & POWER			VISUAL COMFORT		LIGHT DISTRIBUTION
CCT	ENERGY (NOM.)		LIGHT (lm)	POWER (W)	EFFICACY (lm/W)	MAX INTENSITY 45-90° (Cd)	UGR (4H x 8H)	
SK1Mx3-RW1840 4000 K	B	9 W	897	8.8	101.9	59	12.1	 3" Fixed Wide Beam
	C	14 W	1350	13.7	98.6	88	13.5	
	D	18 W	1763	18.8	93.8	115	14.5	
SK1Mx3-RW1835 3500 K	B	9 W	870	8.8	98.9	57	12.0	
	C	14 W	1310	13.7	95.6	86	13.4	
	D	18 W	1710	18.8	91.0	112	14.4	
SK1Mx3-RW1830 3000 K	B	9 W	849	8.8	96.4	55	11.9	
	C	14 W	1278	13.7	93.3	84	13.4	
	D	18 W	1668	18.8	88.7	109	14.3	
SK1Mx3-RW1827 2700 K	B	9 W	798	8.8	90.6	52	11.7	
	C	14 W	1201	13.7	87.7	78	13.1	
	D	18 W	1568	18.8	83.4	102	14.1	
							Beam Angle	59°

3" Fixed, Medium Beam

CONFIGURATION			LIGHT & POWER			VISUAL COMFORT		LIGHT DISTRIBUTION
CCT	ENERGY (NOM.)		LIGHT (lm)	POWER (W)	EFFICACY (lm/W)	MAX INTENSITY 45-90° (Cd)	UGR (4H x 8H)	
SK1Mx3-RM1840 4000 K	B	9 W	948	8.8	107.8	36	10.0	 3" Fixed Medium Beam
	C	14 W	1412	13.7	103.1	53	10.0	
	D	18 W	1845	18.8	98.2	70	10.0	
SK1Mx3-RM1835 3500 K	B	9 W	920	8.8	104.5	35	10.0	
	C	14 W	1370	13.7	100.0	52	10.0	
	D	18 W	1790	18.8	95.2	68	10.0	
SK1Mx3-RM1830 3000 K	B	9 W	897	8.8	102.0	34	10.0	
	C	14 W	1336	13.7	97.5	50	10.0	
	D	18 W	1746	18.8	92.9	66	10.0	
SK1Mx3-RM1827 2700 K	B	9 W	843	8.8	95.8	32	10.0	
	C	14 W	1256	13.7	91.7	47	10.0	
	D	18 W	1641	18.8	87.3	62	10.0	
							Beam Angle	40°



SPECIFICATION DATA

SPEAK RECESSED MULTIPLE 3"
(SK1Mx3 | SK1Lx3)

VERSION PERFORMANCE – 3" FIXED

1 Light Module, Recess Center, White Finish, 80 CRI

3" Fixed, Narrow Beam

CONFIGURATION			LIGHT & POWER			VISUAL COMFORT	
CCT	ENERGY (NOM.)		LIGHT (lm)	POWER (W)	EFFICACY (lm/W)	MAX INTENSITY 45-90° (Cd)	UGR (4H x 8H)
SK1Mx3-RN1840 4000 K	B	9 W	856	8.8	97.2	79	13.1
	C	14 W	1278	13.7	93.3	119	14.5
	D	18 W	1670	18.8	88.8	155	15.4
SK1Mx3-RN1835 3500 K	B	9 W	830	8.8	94.3	77	13.0
	C	14 W	1240	13.7	90.5	115	14.4
	D	18 W	1620	18.8	86.2	150	15.3
SK1Mx3-RN1830 3000 K	B	9 W	810	8.8	92.0	75	12.9
	C	14 W	1209	13.7	88.3	112	14.3
	D	18 W	1580	18.8	84.0	147	15.2
SK1Mx3-RN1827 2700 K	B	9 W	761	8.8	86.5	71	12.7
	C	14 W	1137	13.7	83.0	106	14.1
	D	18 W	1485	18.8	79.0	138	15.0

